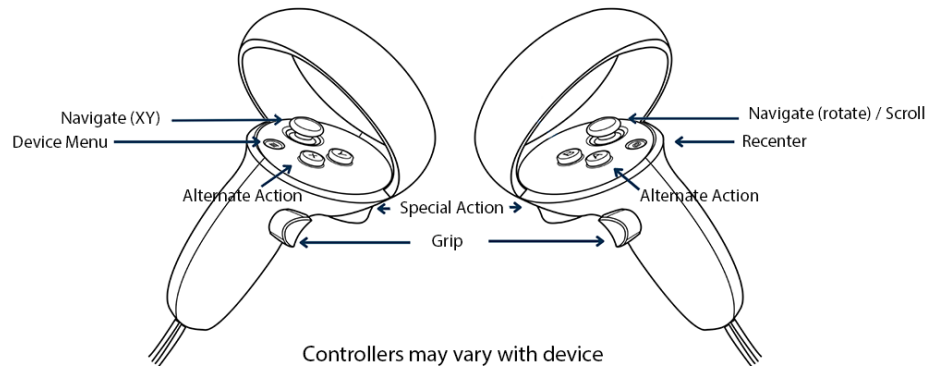




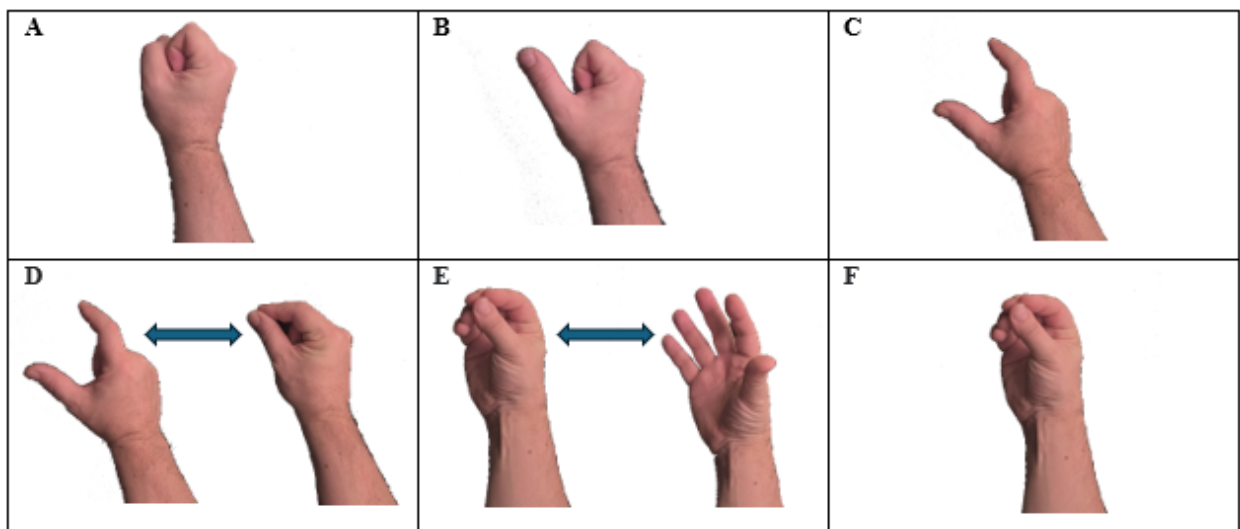
Controller Mode

- **Grip:** Grab objects using the hand trigger.
- **SPECIALACTION:** Perform context-sensitive actions using the index trigger.
- **Device Menu:** Open the Meta or Pico System Menu with one push of the Meta/Pico Button (left controller).
- **Recenter:** Recenter position in space by keeping the Meta/Pico Button pressed (right controller).
- **Alternate Action:** Alternate between push and pull (syringe) using the A (right) or X (left) Buttons.
- **Scroll the tablet:** By using your hands directly on the tablet or using the right thumb stick up/down on the controller.
- **Navigate in the lab (controllers only):** Although not recommended (it can induce motion sickness), you can navigate in the lab with the left thumb stick (XY plane) and rotate with the right thumb stick.



Hand Tracking Mode

- **Grip (A, B, or C will work):** Grasp objects by forming a fist with your pinky, ring, and middle fingers. You can make a fist, but the index finger and thumb could be used for a Special Action.
- **SPECIALACTION (D):** Activate different actions by pinching the index and the thumb, while grabbing the interactive object.
- **Menu(E):** Open the Meta or Pico System Menu by pinching your index finger and thumb together while your hand faces the headset and then opening the hand.
- **Recenter (F):** Recenter position in space by pinching your index finger and thumb together for 3 seconds.
- **Scroll the tablet:** By using your hands directly on the tablet.



NB: Although hand tracking mode works with Meta Quest 2 and Pico Neo 3, we recommend using controllers with these headsets as hand tracking is natively not as reliable as other headsets.



Adjusting the tab & tablet

- **Adjusting the tab:** At game start, you'll find in front of you a blue sphere. Grab it to replace the lab at the desired height and location to fit your real place.
- **Adjusting the tablet:** Grab the tablet stand and place it at the most convenient location for you.

Tricky Instruments and Containers

Spatulas, Tweezers, and Ice tongs / Lighter / Washing Bottle

To open and close tweezers and tongs, use **SPECIAL ACTION** command.

To turn on the lighter or squeeze the washing bottle, use **SPECIAL ACTION** command.

Lab Stand and Clamps

Attach clamps to the stand to complete a montage. You can click on the red arrow on the top to rotate the empty clamps to attain the desired setup.

Syringe

Hand Tracking: Grab the syringe with one hand, and with the other hand put your finger on the up or down arrow to pull or push

Controllers: Use **SPECIAL ACTION** command to push or pull and **press X** (left) or **A** (right) controller buttons to alternate between push and pull.

Stirring / Shaking liquids

- Use glass stirrer
- Shake capped containers
- Use a magnetic agitator with the hotplate

Note: Test tubes and Erlenmeyer flasks require caps before shaking.

Pipette and Dropper

To use, use **SPECIAL ACTION** command. Liquid will be pulled if empty, if not liquid will flow in increment of 1 drop - 0.05mL (dropper) or 1mL (pipette).

Burette

To prepare the burette: Fill the gas burette with water, then block its opening by doing the **SPECIAL ACTION** command and keep the index and the thumb pinched. You can then hold the burette upside down and plunge it into a water container. Once secured with clamps and in the container filled with water, you can open your fingers and ungrab.

Lab Protection

Wearing and removal are done by grabbing the gloves (nitrile and heat protection), protective glasses, and lab coat, or their empty location (for removal).